

COLLEGE BOUND TO, THROUGH, AND BEYOND

PRIMARY ACADEMY
DETROIT EDISON PUBLIC SCHOOL ACADEMY



ENJOY YOUR SPRING BREAK!

Spring break is on its way!!

Please be safe and enjoy your time off to relax and enjoy the warmer weather.

There will be no school Monday, April 1st through Friday, April 5th. We look forward to your return on Monday, April 8th. Students, please be ready to focus and start MSTEP testing!

MSTEP K-5 Informational Meeting

When: Tuesday, March 26th, 2019

Time: 4:15- 5:15pm

Location: Cafeteria

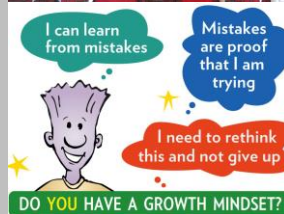
RSVP via the link below:

<https://www.eventbrite.com/e/mstep-informational-meeting-tickets-59065682045>



NED'S MINDSET MISSION

Assembly Flashback:



MONDAY 03/25	Full day 7:50-3:30
TUESDAY 03/26	Full day 7:50-3:30
WEDNESDAY 03/27	Full day 7:50-3:30
THURSDAY 03/28	Full day 7:50-3:30
FRIDAY 03/29	Full day 7:50-3:30

Upcoming Important Dates:

03/26- MSTEP Parent Meeting
04/01- 04/05- Spring break
04/19 & 04/22- No school for Good Friday holiday

*Please note that DEPSA cannot release students to Lyft or Uber drivers at any time. Thank you for your understanding!



SPOTLIGHT

Women in History!



Joan of Arc (1412- 1431)

Joan of Arc is considered a heroine of France for her role during the Hundred Years' War and is now portrayed as a Roman Catholic saint.

Reminders:

- MSTEP parent meeting this Tuesday, **March 26th**, from 4:15-5:15pm.
- Ned's Yo-yo sale will continue thru Thursday, **March 28th**, at the designated times.
- Spring break will be **April 1st thru April 5th**. No school during this time. Please return to school on **April 8th**.
- There will be no school on **April 19th and April 22nd** due to the Good Friday holiday.

Ned's Mindset Mission Souvenirs Sale!

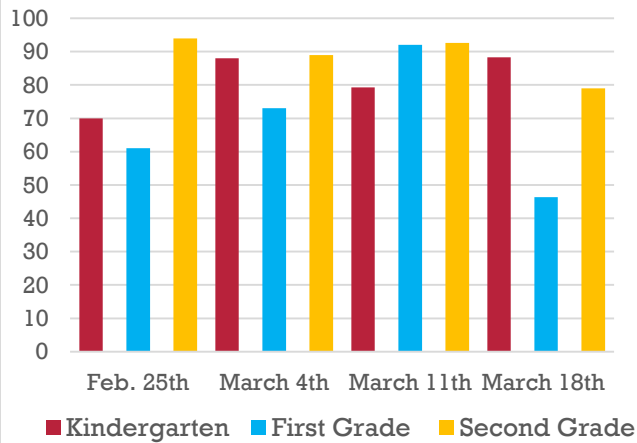
What's for Sale? Yo- Yos

Sales Location: Economic Center



Times: Monday and Wednesday 7:50- 8:15am, Tuesday and Thursday 3:00-3:30pm. **March 25th- 28th**.

C3 Data Completion

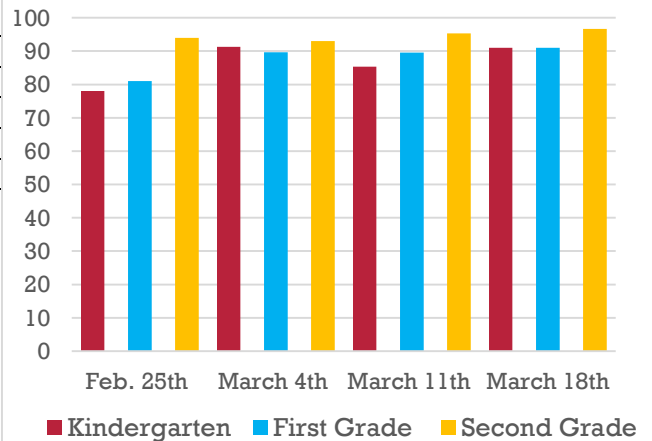


K: **88.3%**
1st: **46.3%**
2nd: **79%**

Re-Enrollment & Applications

Re-enrollment forms were passed out to all students on February 14th, 2019. They were due on March 1st. If we haven't received your scholar's form back yet, we are assuming that you are not planning on re-enrolling them for the 2019-2020 school year. Also, DEPSA is accepting applications for the 2019-2020 school year. Applications can be found at the front desk.

Read & Respond Completion



Who turned in their Read and Responds last week, March 18th thru March 22nd?

Kindergarten: **91%**
First Grade: **91%**
Second Grade: **96.7%**

GRADE LEVEL	READING			MATH			LANGUAGE ARTS		
	FALL	WINTER	SPRING	FALL	WINTER	SPRING	FALL	WINTER	SPRING
KINDERGARTEN	147	155	166	145	155	162	147	157	166
FIRST	166	176	182	167	178	183	166	174	180
SECOND	180	188	194	181	189	194	180	189	194

Quarter 3 After School Tutoring:

This will be the last week of after school tutoring. It will be held this Monday and Tuesday from 4-5:30pm, with Tuesday being the last day. Please return surveys that were sent home last week so we can try to improve tutoring for next time!

Kindergarten Update:	
Reading	Students will be taking a spelling test on be, me, play, have, ow, want, cub, but, big, and bit. Students will continue learning about community helpers during reading time. The shared story will be <i>Tub the Cub</i> .
Math	Students will continue with Module 4 working through story problems and number sentences. The Mid-Module Assessment will be taken on Friday with two days of review prior.
Social Studies	Students will begin Unit 2 Lesson 3, focusing on map usage.
Science	Students will continue learning about weather measurement.
Writing	Students will continue working on general opinion writing, finishing their community helper writing if needed.
First Grade Update:	
Writing	Students will continue to work on opinion writing.
Math	Students will work on addition within 40.
Science	Students will learn about patterns in space.
Social Studies	Students will learn about how people adapt and modify environments.
Second Grade Update:	
Writing	Students will start their second opinion writing piece in which they state an opinion, supply reasons that support the opinion, use linking words (e.g., because, and, also) to connect opinion and reasons, and provide a concluding statement or section.
Math	Students will relate manipulative representations (place value disks) to the addition algorithm (vertical form).
Social Studies	Students will continue to describe the natural, human, and capital resources needed for production of a good or service in a community. They will also discuss renewable and nonrenewable resources.
Science	Students will continue to analyze data obtained from testing different materials to determine which materials have the properties that are best suited for an intended purpose.